



ECO RAY

All-in-One & Easy-to-Refresh
Solar Street Light

With a removable battery module, adjustable
LED module, built-in microwave sensor, and
timmer dimming



195 lm/W



30-100W



IP66



Timmer
Dimming



Microwave
Sensor



MPPT



SAVES
COSTS



ENVIRONMENTALLY
FRIENDLY



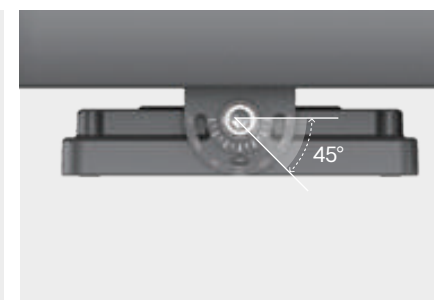
Sustainable Design

The removable battery box and LED module facilitate early storage and later refresh after the service life has expired, saves costs, and is environmentally friendly.



Aluminum Alloy Profile

Slim housing, refined aesthetic



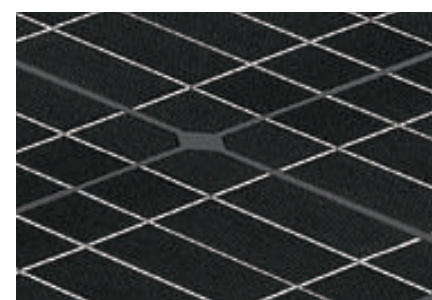
±45° Adjustable LED Module

By changing the angle of the LED module, the lighting effect and visibility can be improved



Removable Battery Box(LiFeP04)

Convenient for future refresh, saving labor costs



Mono Crystalline Solar Panel

Long-term stability and reliability, high conversion rate



Microwave Sensor & MPPT Controller

Solar energy conversion and utilization efficiency is high and energy saving



On/Off Switch

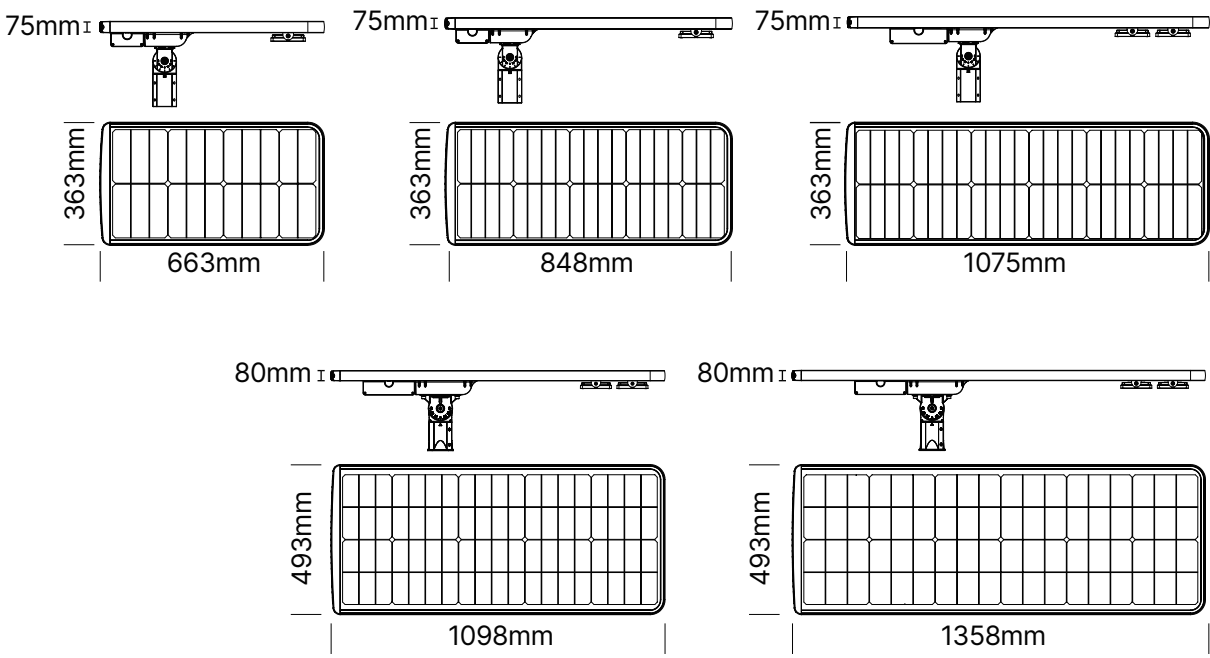
Ensure no discharge during transportation and storage

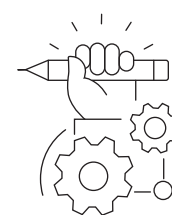
Affordable Solar Street Light

Five wattages with different sizes and profile heatsinks achieve high cost-effectivity.



Dimension (mm)





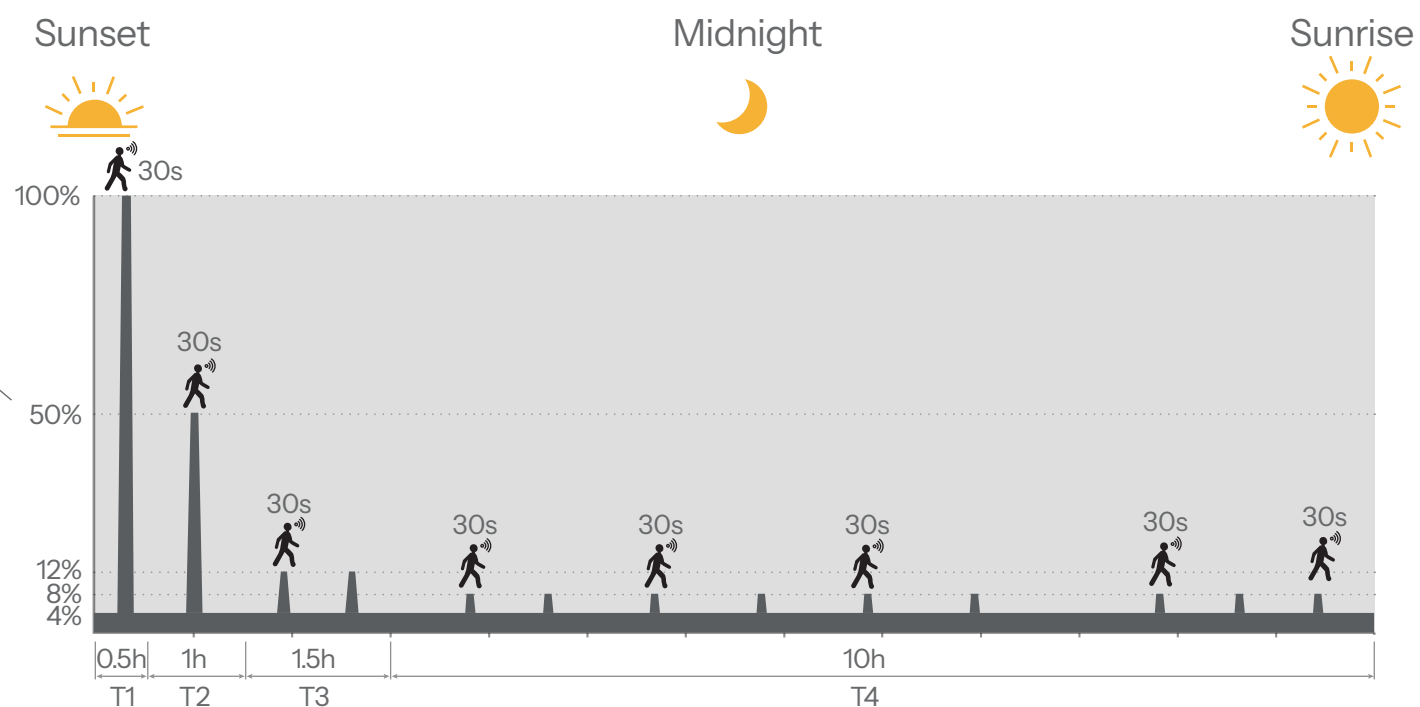
Customizable Size, Solar Panel & Battery

- SunRay features a profile design, allowing for customizable dimensions.
- Solar panels and batteries can be tailored to meet the diverse needs of projects.



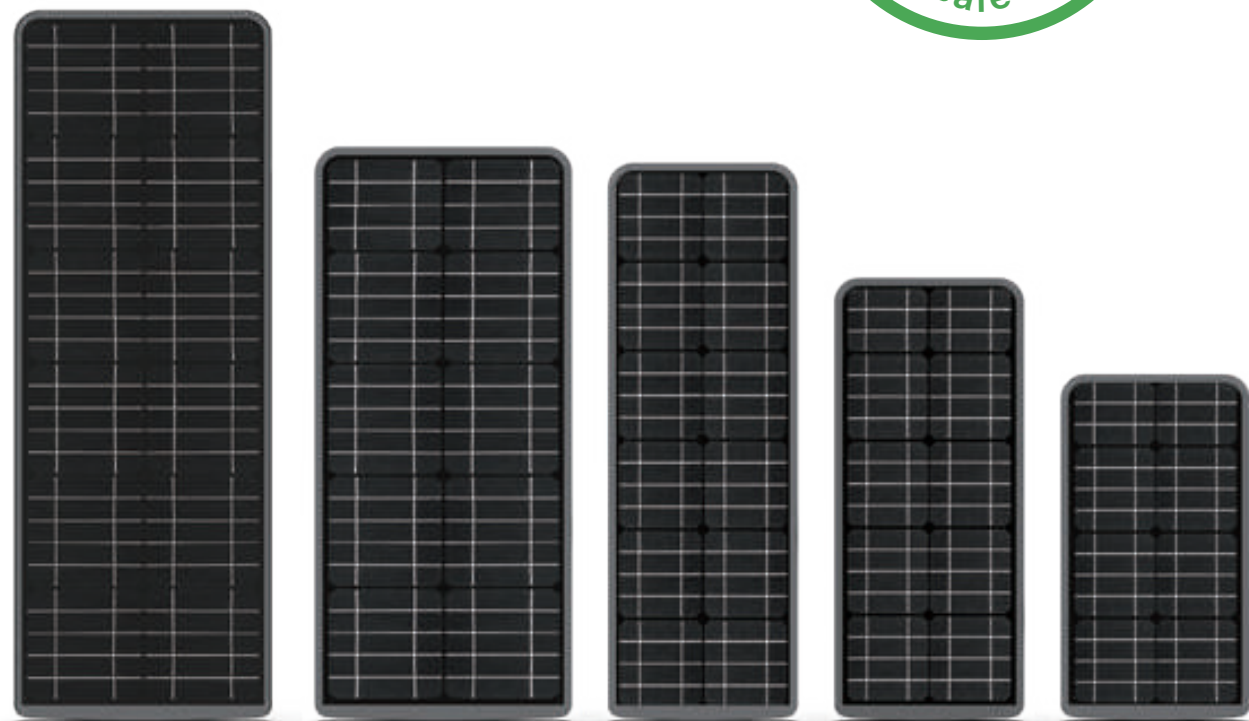
Built-in Microwave & Timmer Dimming

- Lights up brightness based on the program setting.
- Enters dark mode when no one is present.
- With timer dimming, you can set 4 stages in night mode yourself by the remote controller.



Eco-Friendly Safety Choice

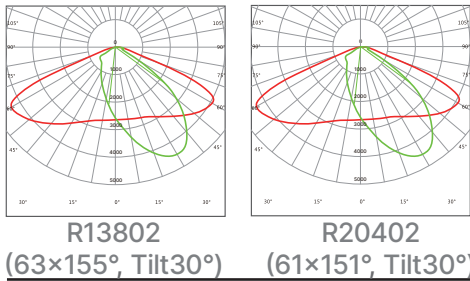
- Benefits remote areas.
- No grid connection required.



ECO RAY Product Range

Model No.	SL01-030	SL01-040	SL01-060	SL01-080	SL01-100
Power Consumption (W)	30	40	60	80	100
Battery	LiFePO4				
Battery Capacity (WH)	76.8	153.6	230.4	307.2	460.8
Solar Panel	Mono-crystalline				
Solar Panel Wattage (W)	39	52	66	90	113
Charging Time (hrs)	2.5	3.5	4	4	4.5
Operating Time	Full power on 3-5 hrs, intelligent mode: 3 days				
Solar Charge Controller	MPPT				
Control	Microwave induction				
Luminous Flux (lm)	5850	7800	11700	15600	19500
Efficacy (4000K Ra80)	195 lm/W				
CCT & CRI	4000K (3000K, 5000K optional), Ra70 (Ra80 optional)				
Protection Rating	IP66				
Operating Temperature	0 to + 50°C				
Warranty	Battery: 3 years Other accessories: 5 years				
Product Dimension (mm)	663×363×75	848×363×75	1075×363×80	1098×493×80	1358×493×80
Luminaire Net Weight (kg)	7.7	8.9	11.8	15.8	18

Photometric
Diagrams



Mounting
Option



Pole mounting

