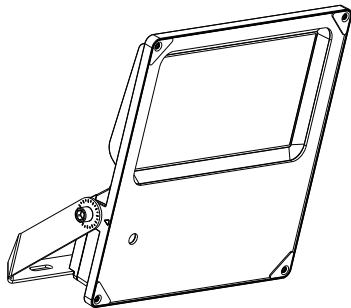


LED Flood Light

Installation Instructions



WARNING

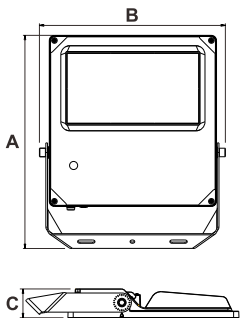
- Turn off power supply before installation or before doing any maintenance work.
- If the external flexible cable or cord of this luminaire is damaged, it shall be exclusively replaced by the manufacturer or his service agent or a similar qualified person in order to avoid a hazard. It is necessary to install a surge protection device in distribution box to extend luminaire lifespan.
- Turn on the luminaire after it is well grounded.
- Clean the luminaire regularly if using it in heavy dust or oil gas area.
- The light source contained in this luminaire shall only be replaced by the manufacturer or his service agent or a similar qualified person.



Caution risk of electric shock

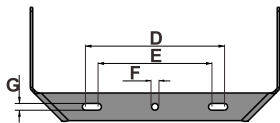
- Turn off the power supply before adjusting the DIP switch.
- Do not use metal tool to adjust DIP switch, and adjust the switch gently.
- Terminal block not included. Installation must be performed by a qualified person.

Dimensions



* Please subject to actual product for accurate weight.

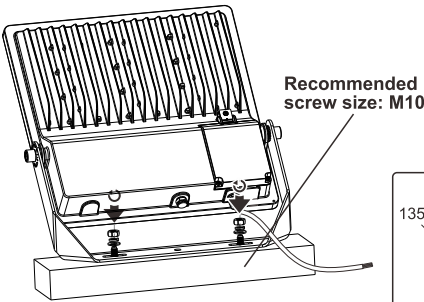
Power Consumption (W)	50	100	150	200	240/300	400/500
Dimensions (AxBxC) (mm)	342x310x56	346x355x57	425x388x61	474x410x61	500x436x68	622x489x72
Net Weight (±6%KG)	2.5	3.6	4.7	5.5	6.4	10.9
Projected Area (M ²)	0.08	0.1	0.14	0.17	0.19	0.27



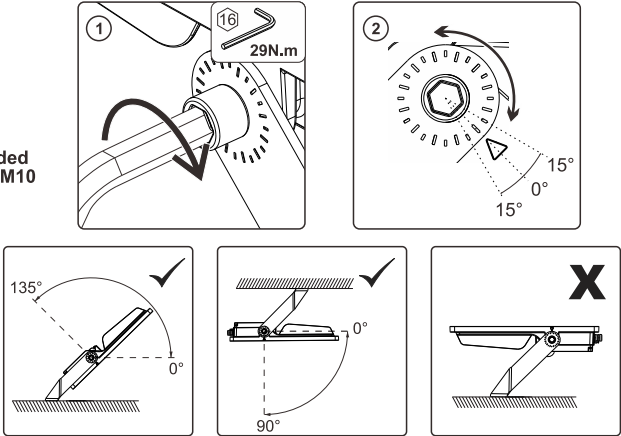
Unit (mm)	D	E	G	F
50W	170	130	11	11
100W	190	150		
150W	202	163		
200W	210	170		
240W	225	185		
300W				
400W	285	215	17	22
500W				

Installation

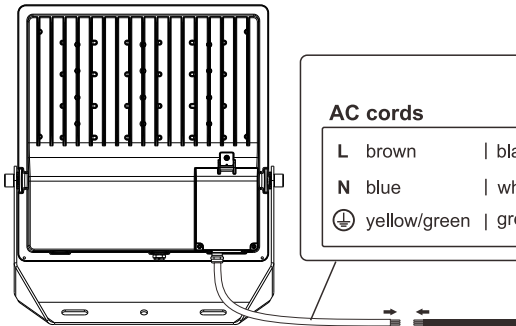
This is not an included accessory and need to be sourced separately.



Rotatable Angle



Connect Wires



AC cords

L brown	black
N blue	white
⊕ yellow/green	green

Warning! Do not wire dim cord to high voltage, or dim function will fail.

DIM cords

Note: color for dim cords subject to the cable label on luminaire

Function(please refer to actual model)

Power Select/CCT Select/Photocell select

1

3 0.5N.m

2

* Please subject to the actual data on nameplate

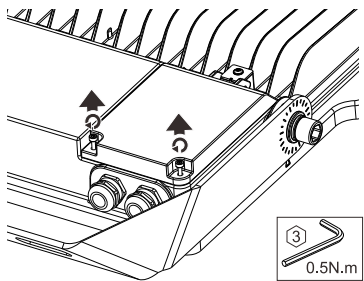
Power		
Low	Medium	High

Daylight Sensor			
ON	25lux	200lux	Disable
OFF	75lux	600lux	

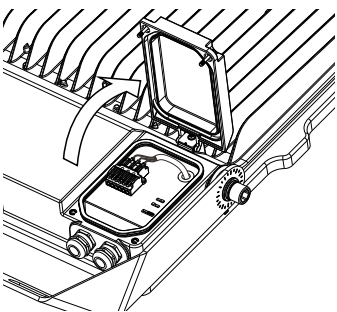
CCT		
WW	NW	CW

Interconnect Wiring

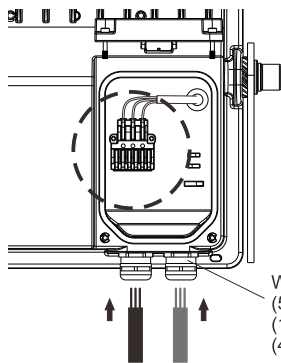
1 Don't pull out the bolt when loosen the screws



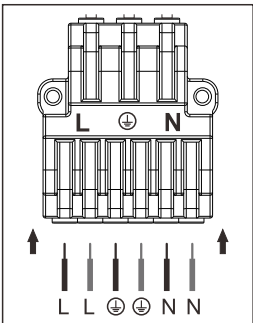
2



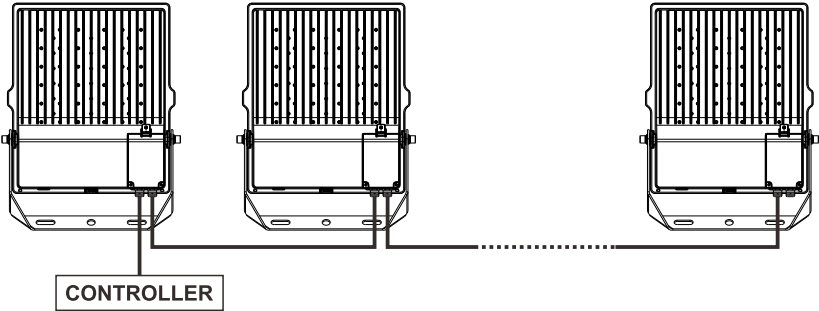
3



Wire Diameter
(50-100W) M12: Ø3-8mm
(150-300W) M16: Ø4-10mm
(400-500W) M20: Ø6-14mm



4



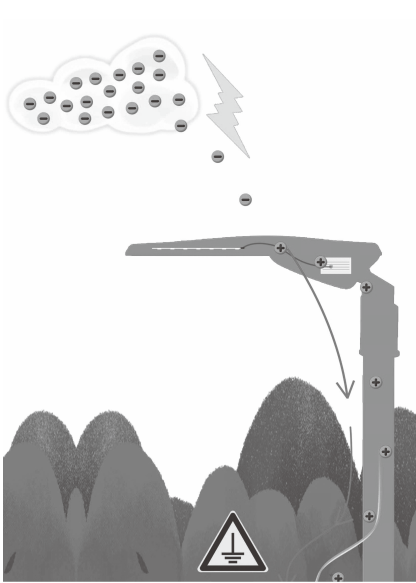
Break	B16	B25	C16	C25
50W	18pcs	28pcs	22pcs	35pcs
100W	6pcs	9pcs	10pcs	15pcs
150W	6pcs	9pcs	10pcs	15pcs
200W	3pcs	6pcs	6pcs	10pcs
240W	3pcs	6pcs	6pcs	10pcs
300W	3pcs	5pcs	5pcs	8pcs
400W	1pcs	3pcs	3pcs	5pcs
500W	1pcs	3pcs	3pcs	5pcs

Precautions for Outdoor Lighting

Lightning is a common natural phenomenon. When the accumulation of electric charge in the thundercloud to a certain degree, air breakdown will occur to cause electrostatic discharge between the clouds, or between the cloud and the earth. Normally there are direct lightning and induction lightning, most LED luminaires damage caused by induction lightning, such as electrostatic induction or magnetic field induction.

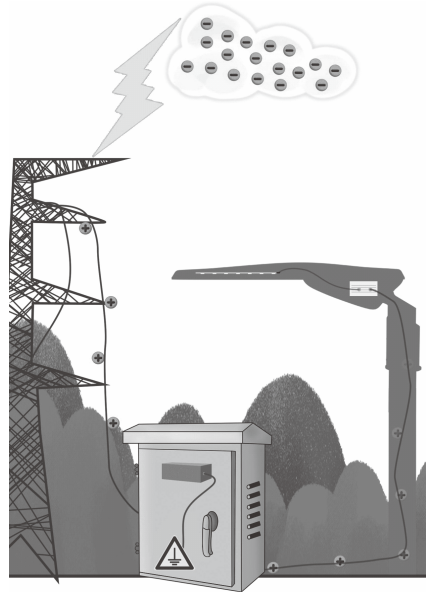
Below pretreatment can reduce lightning hazard, and extend luminaire lifetime.

1. LED luminaire should be effectively grounded



With effective grounding, the electric charge can be introduced to ground quickly

2. Install surge protector in power distribution box



The SPD can absorb most surge energy before luminaire