

KIMBAL Range INSTALLATION INSTRUCTIONS (Intended for indoor use only ta 25°C)



KF4 Fixed Recessed Downlight

KF418 (1) 150mA
KF428 (2) 250mA
KF438 (3) 350mA
KF458 (5) 500mA

IP 20 Without Lens
IP 64 (LED Optical Chamber) With factory fitted Lens
IP 54 With site fitted Lens

Complies with IEC60598
Complies with AS/NZS60598
RoHS compliant

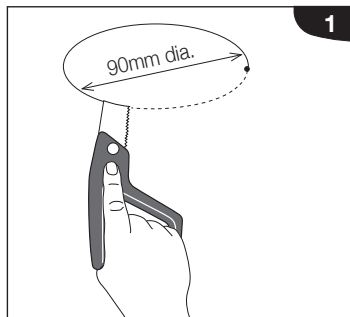
- Rated wattage 6-20W
- Un: 220-240V fr: 50/60HZ
- Uout: 34-38VDC
- PF 0.9C



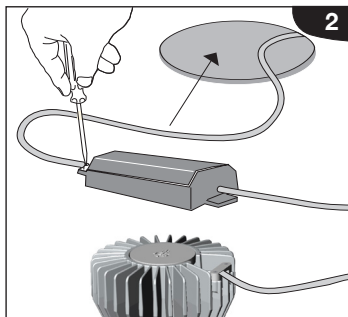
Note: The light source contained in this luminaire shall only be replaced by the manufacturer or his service agent or a similar qualified person.

Note: If the external flexible cord of this luminaire is damaged it shall be replaced by the manufacturer, its service agent or a similarly qualified person.

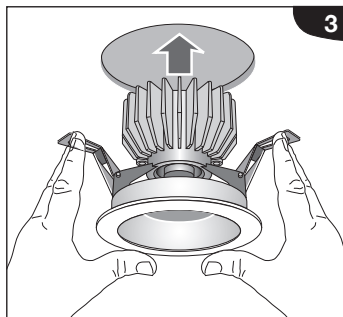
FIXED DOWNLIGHT INSTALLATION



1. Cut 90mm diameter mounting hole.



2. Connect driver, then insert into ceiling space.

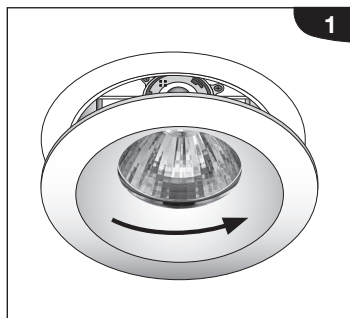


3. Gently insert downlight into ceiling while holding back mounting clips.

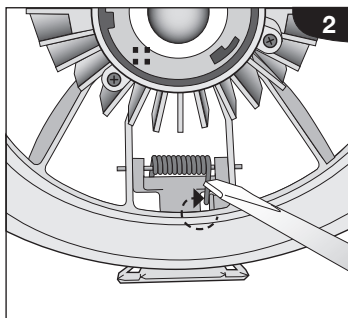


4. Ceiling ring/reflector assembly can be removed (turn anti-clockwise) to allow for cleaning/painting ceiling.

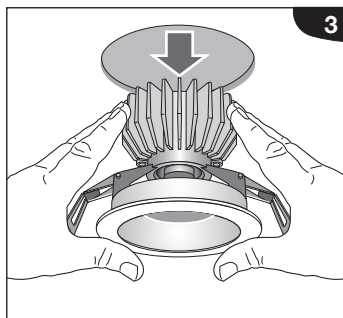
TO REMOVE FIXED DOWNLIGHT



1. Remove ceiling ring/reflector assembly (turn anti-clockwise).

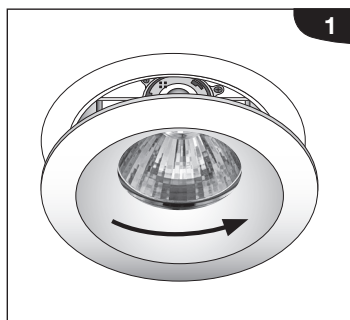


2. Disengage tail of torsion spring by pushing tail behind lug.

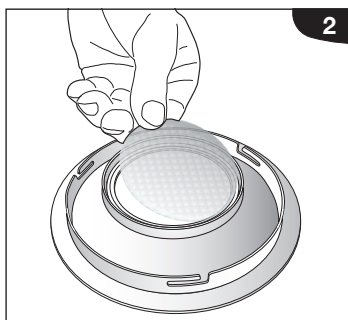


3. Gently remove downlight from ceiling.

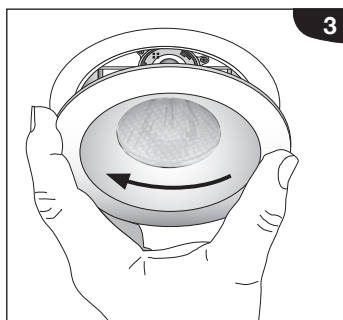
TO FIT LENS ACCESSORY – FIXED RECESSED DOWNLIGHT



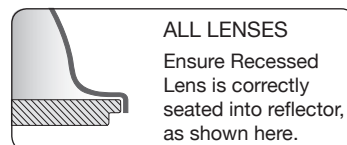
1. Remove ceiling ring/reflector assembly (turn anti-clockwise).



2. **Recessed Reflector Option** – fit Lens Accessory into Ceiling Ring.
Flush Reflector Option – fit Lens Accessory Into Reflector.



3. Re-assemble Reflector Assembly (Reflector, Lens and Ceiling Ring) and install assembly into downlight by turning clockwise. Ensure reflector is fully seated into ceiling ring.



ALL LENSES
Ensure Recessed Lens is correctly seated into reflector, as shown here.

LENS ACCESSORY NOTE:

Prismatic Lens
Smooth surface facing light source.

Diffusion Lens
Matt surface facing light source.

LED PERFORMANCE GUIDE | KF4 Fixed Series | Flood Beam Option (8R) 60 degree

Watts (W)	Driver Current (mA)	Colour Temp 2700K 3000K 4000K	Ultra (KF4U)			Excel (KF4X)			Performance (KF4P)						Insulation Class**
			Output Lumens			Efficacy Lm/W (delivered)			CRI / STEP SDMC			R9 Value			
			U	X	P	U	X	P	U	X	P	U	X	P	
6.2	(1) 150	27	547	608	716	88	98	116	98/2	90/3	80/3	95	56	12	IC-4/C-F
		3	607	653	752	98	105	121	98/2	90/3	80/3	95	56	12	IC-4/C-F
		4	636	684	787	103	110	127	98/2	90/3	80/3	95	56	12	IC-4/C-F
10.5	(2) 250	27	885	985	1159	84	94	110	98/2	90/3	80/3	95	56	12	IC-4/C-F
		3	985	1059	1219	94	101	116	98/2	90/3	80/3	95	56	12	IC-4/C-F
		4	1029	1107	1274	98	105	121	98/2	90/3	80/3	95	56	12	IC-4/C-F
14.2	(3) 350	27	1159	1292	1524	82	91	107	98/2	90/3	80/3	95	56	12	IC-4/C-F
		3	1290	1387	1597	91	98	112	98/2	90/3	80/3	95	56	12	IC-4/C-F
		4	1348	1452	1675	95	102	118	98/2	90/3	80/3	95	56	12	IC-4/C-F
20	(5) 500	27	1620	1803	2122	81	90	106	98/2	90/3	80/3	95	56	12	IC-4/C-F
		3	1802	1938	2231	90	97	112	98/2	90/3	80/3	95	56	12	IC-4/C-F
		4	1884	2026	2332	94	101	117	98/2	90/3	80/3	95	56	12	IC-4/C-F

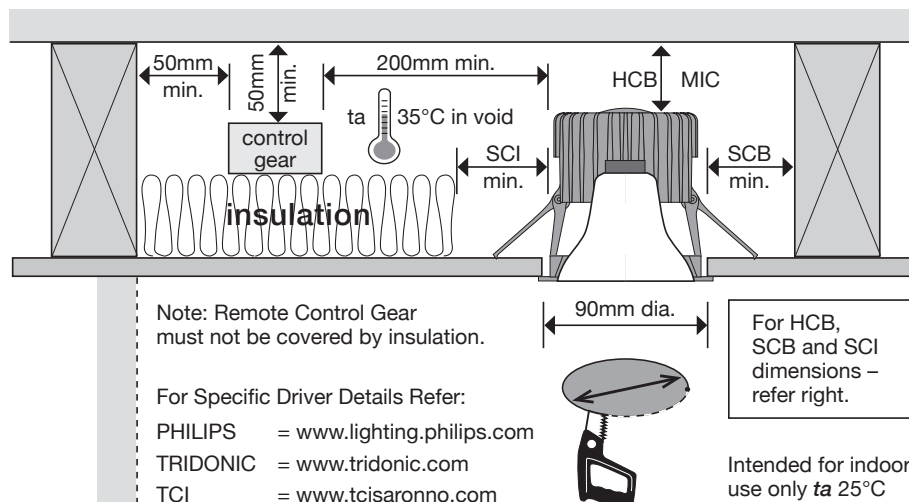
LED Lifetime hrs L90/B10 > 50,000

**Excludes Driver

* Figures extrapolated / interpolated from data at other currents and may vary + / -2.5%

Output Lumens: Delivered lumen output from luminaires, including thermal, electrical and optical losses

BUILDING ELEMENT CLEARANCES



WARNING

Risk of overheating or fire if the clearance distances are compromised.

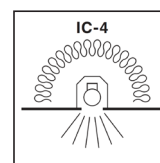
Cables or cords (where provided): If any external cable or cord of the X or Y type luminaire is damaged, it shall be replaced by a qualified person or manufacturers service agent.

For Z type attachments to luminaire, cord cannot be replaced if damaged, the luminaire shall be removed from service.

Flex cord types

- X: Specially prepared flexible cable or cord, may also include a part of the luminaire and only available from manufacturer.
- Y: Attachment may be used with either an ordinary or special flexible cable/cord.
- Z: Attachment of cable/cord that cannot be replaced without damage to luminaire.

CLASSIFICATIONS



**IC-4
LUMINAIRES**

Restricted access

In this Standard, this is assessed for access to high temperature parts by use of a IP4X-1mm probe to sides, top and front face of luminaire. 90°C limit on side or top or mounting surface of luminaire.

Suitable for residential or commercial use in Australia and New Zealand.

Used where air transfer is not permitted or not desired between living space and roof space (there will be no air transfer between spaces even if there is no insulation covering the luminaire).

Typical use is passive house design where no air transfer is allowed.

These luminaires have been tested to show that they are suitable for normal use when covered in building insulation.

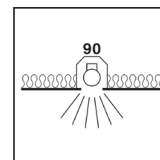
Not verified as tested/compliant to Australian/ New Zealand standards.

Marking is required by standards—no marking indicates noncompliance.

Installation instructions specifying any clearance distance is required by this Standard.

Do not install any luminaire that does not have one of the marking symbols or instructions specifying any clearance distances.

NOTE: For luminaires installed prior to the publication of this Standard (AS/NZS 60598.2.2:201X), which do not have marking and/or installation instructions with clearance distances specified, refer to AS/NZS 3000.



**CA90
LUMINAIRES**

- HCB = 50mm
- SCB = 50mm
- MIC = 50mm
- SCI = 0mm (Abutted)

Risk of fire – Building insulation must not cover this luminaire.

Building insulation may abut the luminaire.

Required clearance from structural members and building elements.

- HCB = Minimum Height Clearance Building Element
- SCB = Minimum Side Clearance Building Element
- SCI = Minimum Side Clearance Insulation
- MIC = Minimum Insulation Clearance