

Beamever

## LINIO NEON I6I5 TV

IP67 protection with high  
performance silicone, UV  
resistant, solvents resistant.  
Seamless line in 30Mtrs roll.

One BIN Only to ensure perfect  
color consistency



Beamever

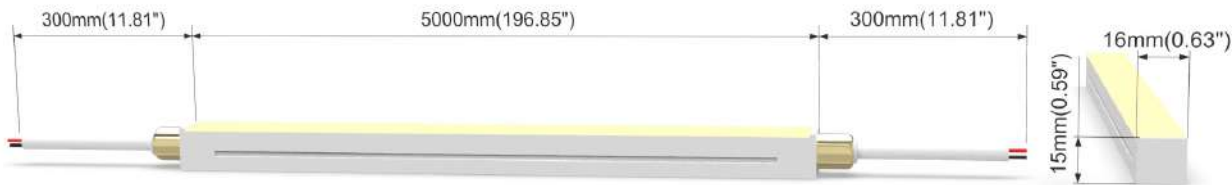
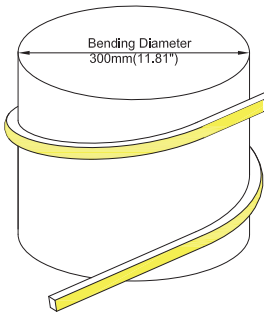


LINIO NEON 1615 TV

- Top view, Vertical bending with radius of 150mm / 5.9".
- DC24V, Cross section size 16mmx15mm/0.63" x0.59" (WxH).
- IP67 protection with high performance silicone, UV resistant, solvents resistant.
- 30M/reel maximum. Max. Run length refers to single side feed in serial connection.
- Easy to be cut and reconnected at project sites.Custom length are available as well.
- Wide color temperature range and Multiple power to meet different lighting needs.

Product Benefits:

- Homogeneous light effect & high light efficiency.
- Extremely durability and flexibility thanks to high performance materials.
- Not just good-looking but also weatherproof.



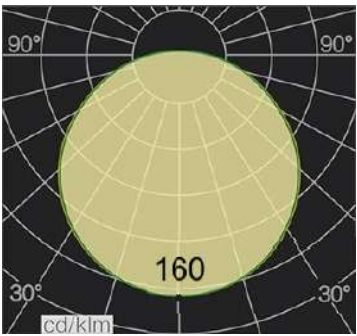
Electrical data

Voltage	DC24V (23.5V <sub>min</sub> , 24.5V <sub>max</sub> )
LED PIN Temperature	Max. 60.9°C /141.6°F
Storage Temperature	-25°C /-13°F <sub>min</sub> , 60°C /140°F <sub>max</sub>
Min. Ambient Tempt.(Ta <sub>min</sub> )	-25°C /-13°F
Max. Ambient Tempt.(Ta <sub>max</sub> )	55°C /131°F@5W, 45°C /113°F@10W, 35°C /95°F@15W
Power(W/m W/ft)	5/1.5, 10/3.1, 15/4.6
CRI	Ra93
Unit Cut	50mm

LM/M	5W	10W	15W
2700K	226	587	718
3000K	236	607	762
3500K	240	596	782
4000K	232	575	752
6500K	236	580	767
Max. Run Length(M)	27	17	14

Important notice

- The given data are typical values due to the tolerances of the production process and the electrical components, values for light output and electrical power can vary up to 10%.
- The given color temperature is neon flex (after extrusion) color temperature.
- Standard cable length is 30cm, if longer cable required, please contact us.
- Male and female connectors are available if needed.
- It is IK08 rated. Please use protection materials if it is walk over application.



Order code

SERIES NAME	COLOR	LENGTH	POWER	CABLE ENTRY
LNT	27= 2700K	05000=5M/196.85"	005=5W	F=FRONT
	30= 3000K		010=10W	S=SIDE
	35= 3500K		015=15W	B=BOTTOM
	40= 4000K			
	65=6500K			

Eg: LNT 27-05000-015-B: LINIO NEON 1615 TV 2700K, 10M/ reel,15W/M,Bottom cable entry.



**Front Cable Entry**  
Suitable for power feed in or straight connection. Do not bend down or aside too sharp.



**Side Cable Entry**  
It can achieve perfect seamless light connection if the cabling space is allowed on the side.

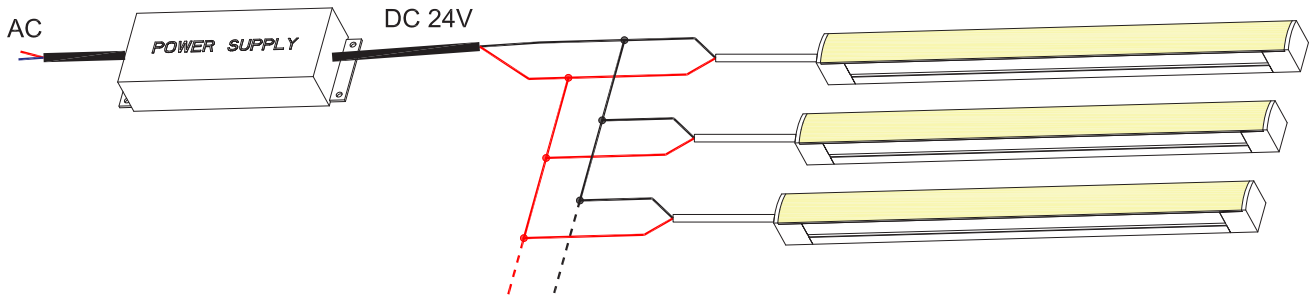


**Bottom Cable Entry**  
It can achieve perfect seamless light connection if the cabling space is allowed from the bottom.

Accessories

Art.#	Description	Picture	Art.#	Description	Picture
SC001	1m anodized aluminium channel for LINIO NEON 1615 TV		MF012	Male and female connectors, 30cm IP67, 2PIN	
BC001	Clips 20mm 316L (Clip required every 25cm, stainless steel)		MF013	Extension connectors, 1m IP67, 2PIN	
M0002	Clips 20mm 316L (Clip required every 25cm, stainless steel)		MF014	Extension connectors, 5m IP67, 2PIN	
E0002	End cap with 30cm cable 2PIN for LINIO NEON 1615 TV		XLG-150-24-A	PSU 24V/150W IP67, Non-dimmable, White, 100-305V supply	
E0003	Closed end cap for LINIO NEON 1615 TV		ELG-150-24B	PSU 24V/150W IP67, 3 in 1 dimming function, White, 100-305V supply	
G0002	Silicone glue		ELG-150-24DA	PSU 24V/150W IP67, DALI control technology, White, 100-305V supply	

Wiring connection



Application

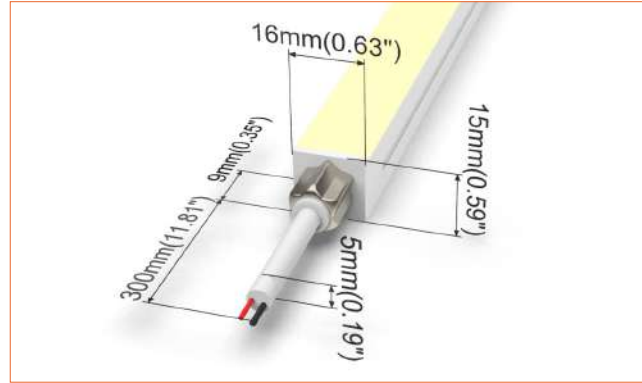
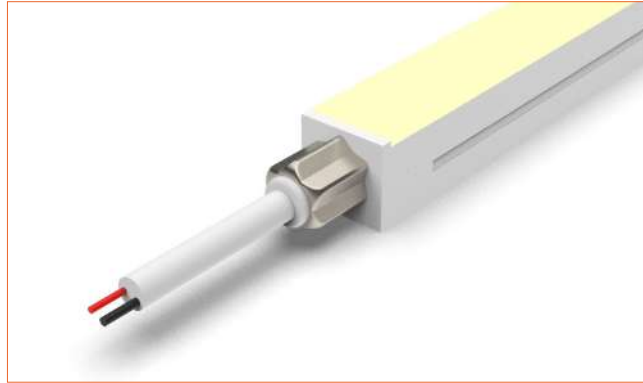


Where to use the product?

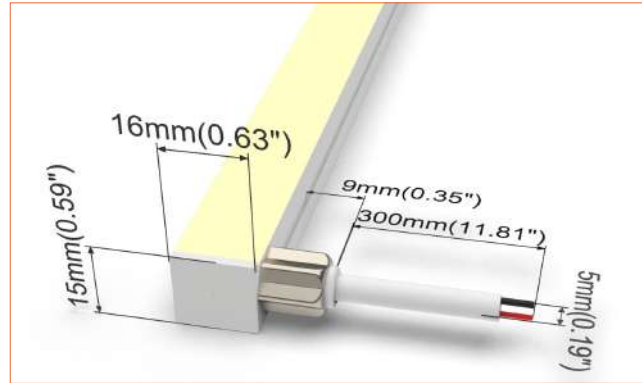
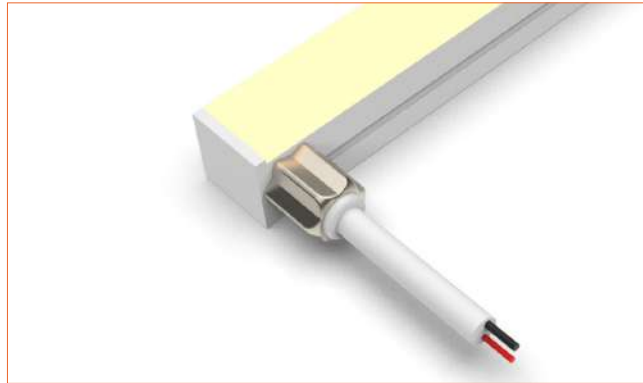
It can achieve stunning lighting effect in both interior and exterior areas, effectively and elegantly highlighting certain areas in architectural lighting projects and tracing straight, curved and even round contours with homogeneous lighting. Its excellent flexibility and cuttability leaves you free to follow your light inspiration and create all kinds of shaped lighting with ease.

It is an ideal option for architectural lighting , facade lighting, landscape lighting....all in all, almost any interior or exterior area can be lighted up and beautified by creating stylish lighting.

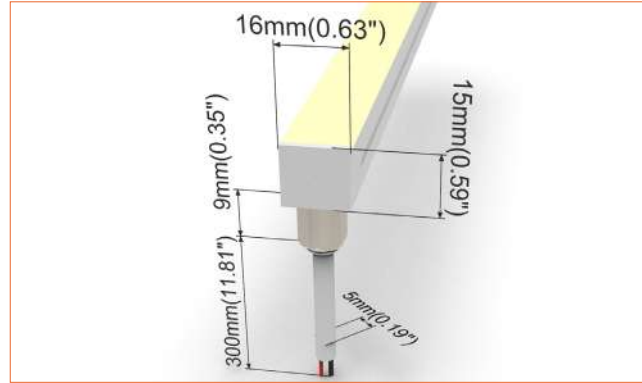
**Front Cable Entry**  
Suitable for power feed in or straight connection. Do not bend down or aside too sharp.



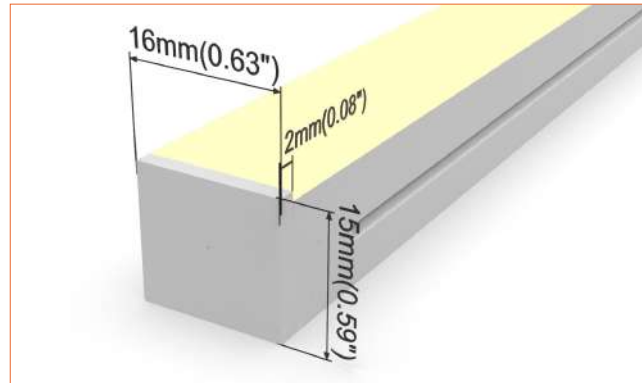
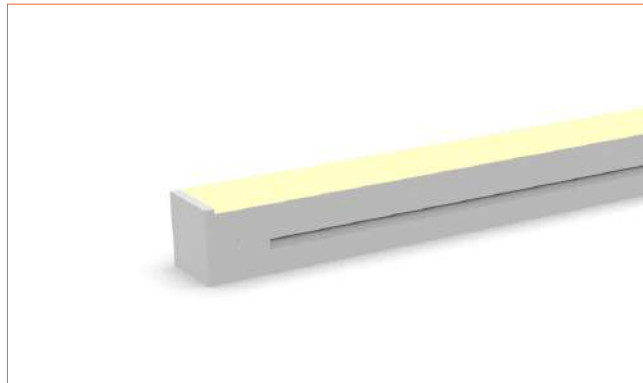
**Side Cable Entry**  
It can achieve perfect seamless light connection if the cabling space is allowed on the side.



**Bottom Cable Entry**  
It can achieve perfect seamless light connection if the cabling space is allowed from the bottom.



**Closed end cap**  
Elegant injecting closed end cap in same size as neon flex body.



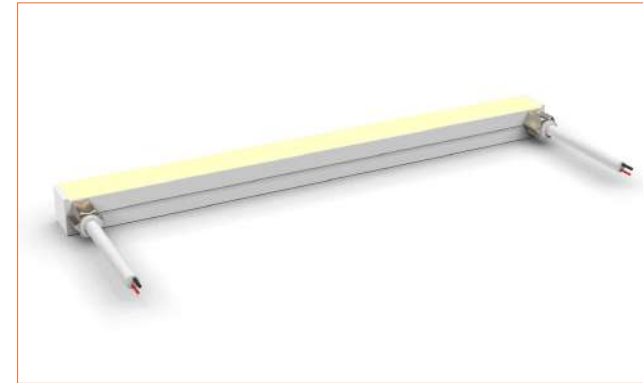
**Front double wire end: 30cm cable from two ends, front cable entry.**



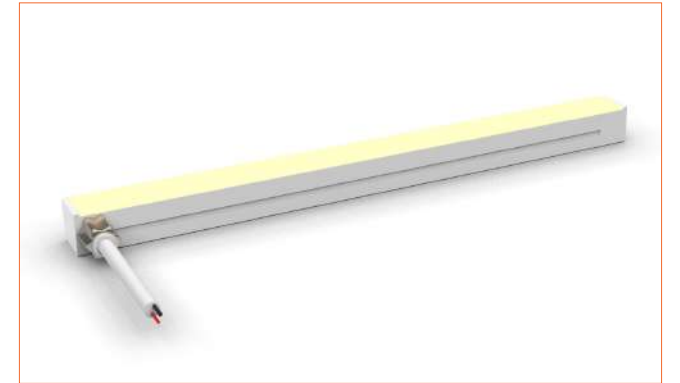
**Front single wire end: 30cm cable from one end, front cable entry.**



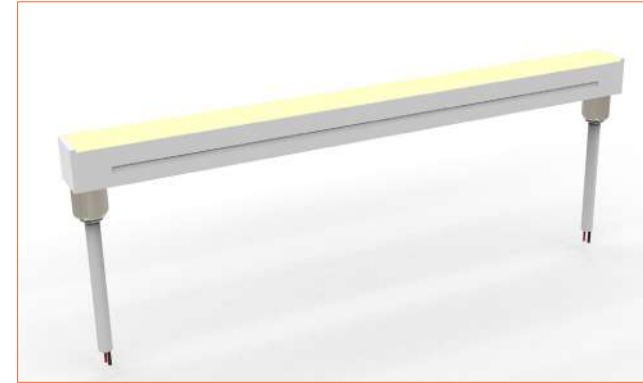
**Side double wire end: 30cm cable from two ends, side cable entry.**



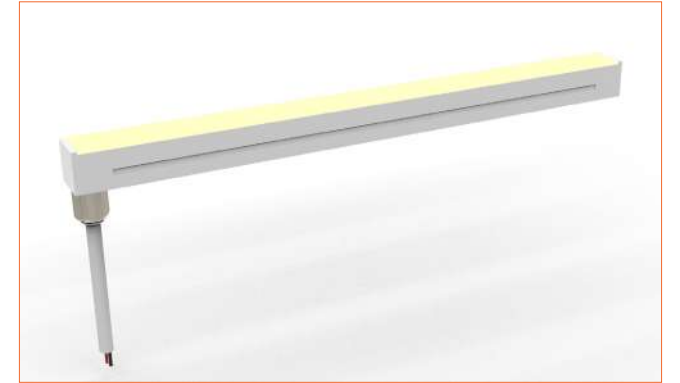
**Side single wire end: 30cm cable from left one only (side cable entry), other end with closed end cap.**



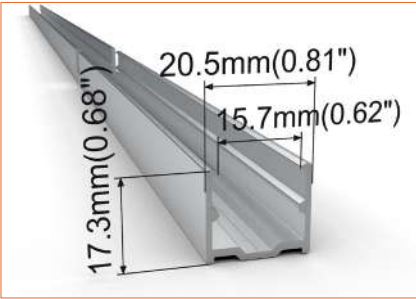
**Bottom double wire end: 30cm cable from two ends, bottom cable entry.**



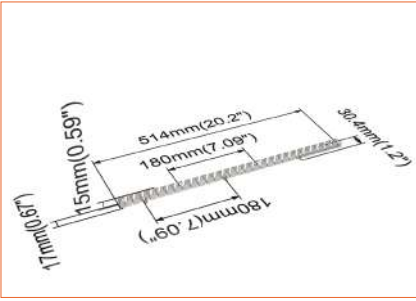
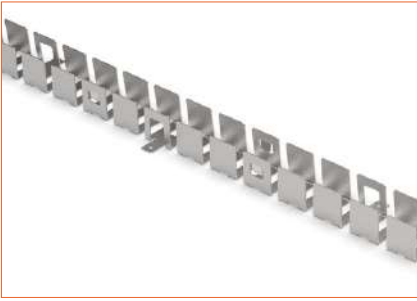
**Bottom single wire end: 30cm cable from left one only (bottom cable entry), other end with closed end cap.**



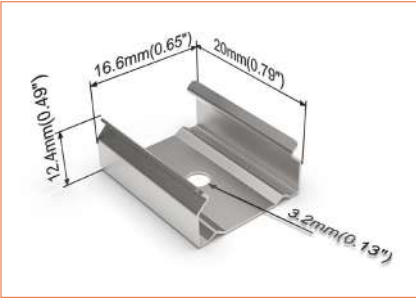




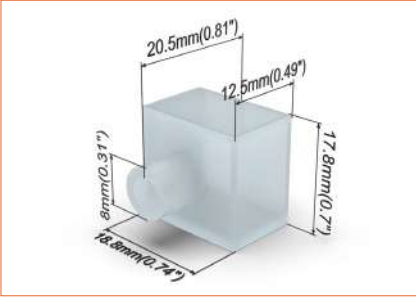
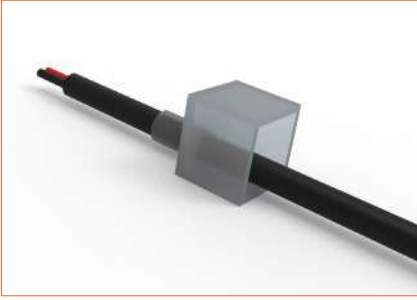
SC001  
Straight aluminium channel  
Length 1mtr



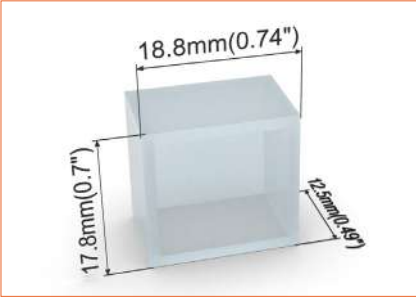
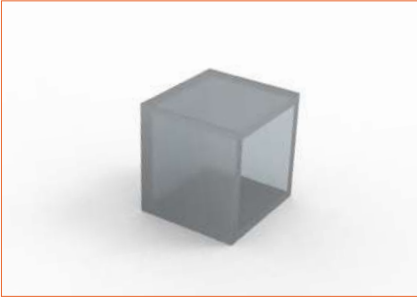
BC001  
Bendable stainless steel channel  
Length 0.5mtr



M0002  
Stainless steel mounting clip



E0002  
End cap with 30cm cable



E0003  
Closed end cap