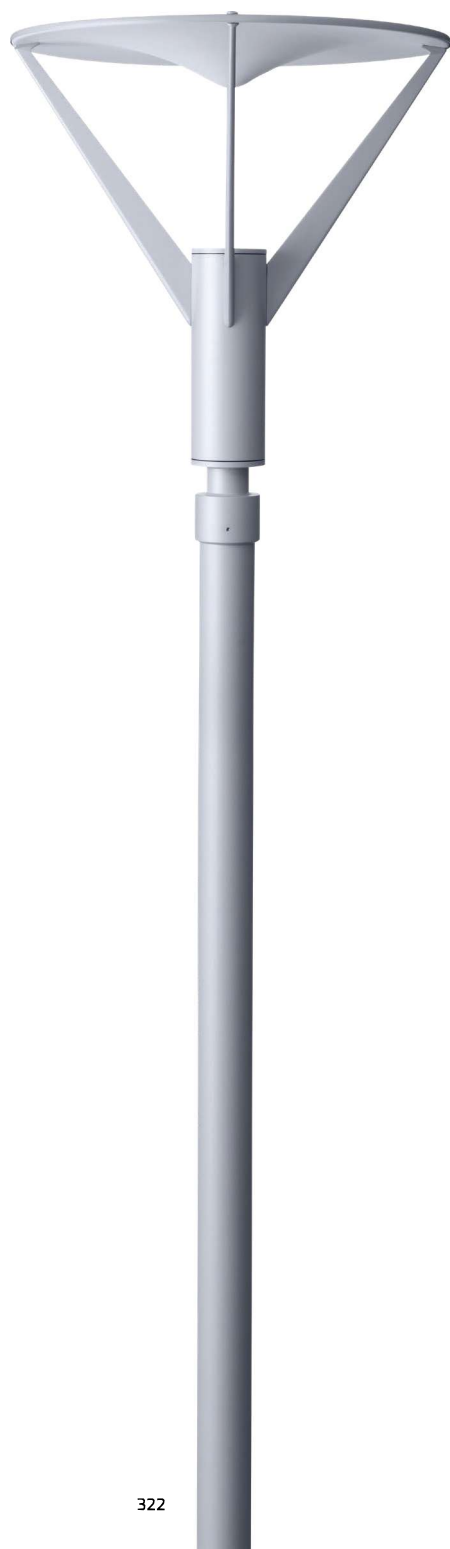


MARANELLO

■ POLE MOUNTED

MARANELLO is a family of large wall mounted and pole-top luminaires with symmetrical low glare indirect light distribution. It is available with COB LED in two wattages in 2700K, 3000K or 4000K.

MARANELLO blends well with all contemporary architectural design during the day and night. It has proven its success in both design and quality. The recommended mounting height is between 3 – 5 metres. Available as an option are Aluminum Poles, Galvanized steel poles and anchorage unit for concrete foundations.



www.unilamp.co.th/en/p/maranello

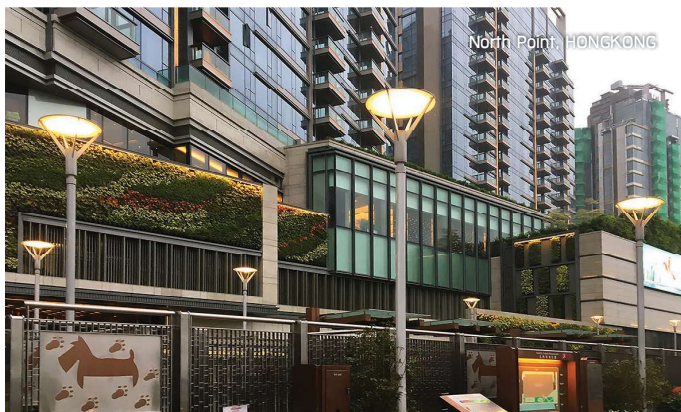
Specification

- Designed, manufactured and tested according to IEC 60598.
- LM6 die cast aluminum and extruded aluminum body.
- Spun Aluminum disc.
- Stainless steel screws.
- Nano ceramic surface conversion.
- Double layer coating.
- Safety glass diffuser.
- Post-cured silicone gasket.
- High quality LED module and driver.
- Pre-wired cable from the factory.
- Installation must be carried out according to the enclosed product manual

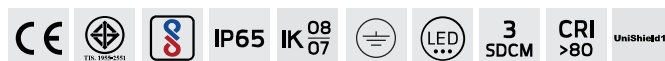
Available Color



****Custom colors are available on request.**



MARANELLO



MARANELLO

Application Type : Pole mounted

Subgroup : Urban ambient

MARANELLO/ 7222

Luminaire Performance

2550 – 3500 lm

57 – 75 W

44 – 47 lm/W

Beam Options



Color Temperature

3000K/ 4000K

Controller

On-off

Input Voltage

220-240VAC 50/60HZ

Accessories




Aluminum pole



Steel pole



Anchor bolt

	Product Code	Luminaire Wattage	Beam	CCT	Luminaire Lumen	Efficacy	Controller	Ordering Code
							⏻	
MARANELLO		57 W	N/A	3000 K	2550 lm	44 lm/W	•	7222-0-3-888-XX
				4000 K	2680 lm	47 lm/W	•	7222-0-3-892-XX
		75 W	N/A	3000 K	3330 lm	44 lm/W	•	7222-0-3-903-XX
				4000 K	3500 lm	46 lm/W	•	7222-0-3-906-XX

*Please contact sales team for special request.