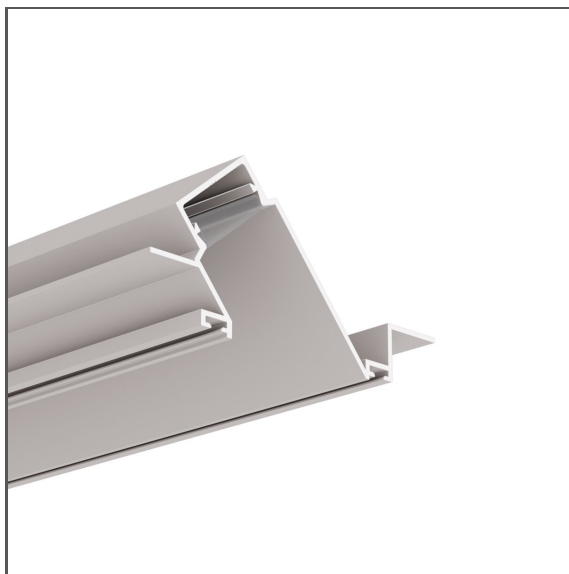


# Profile DIPOKET

Ref. A01177



IP20



- Linear gallery, stage or exhibition lighting
- The lighting fixture integrates with the mounting surface
- Hidden light source
- Lighting angle: 50 Degrees
- Mounting to 12,5 mm - 0.50" drywall
- Stable mounting to a suspended ceiling

## APPLICATION

- decorative lighting and functional

## MOUNTING

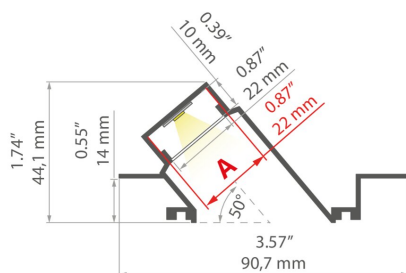
- in drywall, with screws
- can be easily connected into runs and systems

## ADDITIONAL INFORMATION

- the best results are achieved by using a single LED strip centrally placed in a fixture with a transparent cover
- in order to protect the lighting fixture during installation, a TECH-22 protective insert should be used
- standard lengths of KLUŚ profiles and covers: 1000 mm (tolerance  $\pm 1.5$  mm) and 2005 mm / 3010 mm (tolerance + 5 mm); for selected covers: 6050 mm, 10050 mm (tolerance + 5 mm)
- when choosing a different length of profiles / covers than available in the standard, you should additionally choose the cutting service at KLUŚ

## TECHNICAL DRAWING

1:2



## TECHNICAL SPECIFICATIONS

Material	aluminum
Possible fixture IP	20
Possible fixture shapes	linear, polygonal
Width	90.7 mm
Height	44.1 mm
LED gluing width A	22 mm
Number of LED strips A (8 mm wide)	1
Width of the glow	22 mm
Max power of a single KLUŚ LED strip	24 W/m
Lighting at an angle	50
Possibility of obtaining a line of light	yes
Building type	Entertainment/ Arts, Retail, HoReCa object
Facility zone	wall lighting, shop windows and exhibition, communication routes and corridors
The cover is cut to the length of the profile	yes
Can be easily connected into runs	yes
Decorative lighting	yes

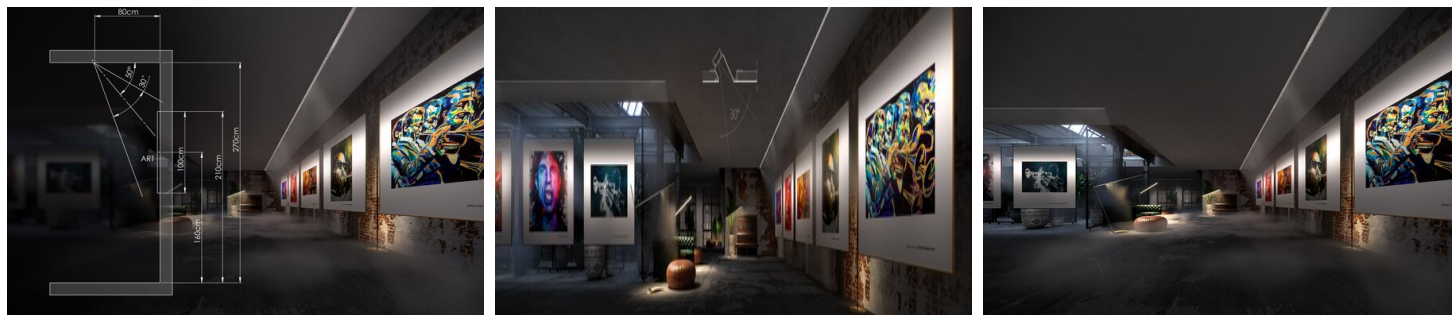
Color	Length	Ref
non anodized	1000 mm	A01177N_1
	2005 mm	A01177N_2
	3010 mm	A01177N_3
<input type="checkbox"/> white lacquered	1000 mm	A01177L10OD_1
	2005 mm	A01177L10OD_2
	3010 mm	A01177L10OD_3

# Profile DIPOKET

Ref. A01177

Functional lighting	yes
Mounting to drywall	yes
To cover with plaster	yes
Wire out back of extrusion	yes

## SAMPLE PROJECTS



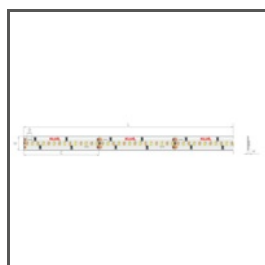
## RELATED ACCESSORIES > COVERS

NAME	MATERIAL	MATERIAL TRANSMITTANCE	COLOR	REF.
Cover HS-22	PC	65 %	frosted	B17011F
		88 %	clear	B17011C

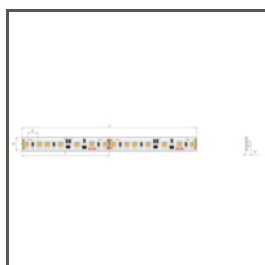
## RELATED ACCESSORIES > END CAPS

NAME	MATERIAL	COLOR	REF.
End cap set DIPOKET	PP	gray	C24461C02
		white	C24461C10

## RELATED ACCESSORIES > RELATED LED > ADJUSTABLE WHITE / DIM TO WARM



**K-27T50-1440-24**  
K-27T50-1440-24

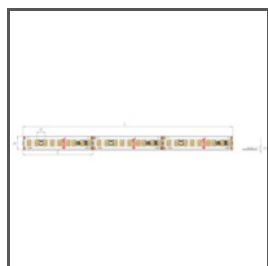


**K-18D30-0960-24**  
K-18D30-0960-24

## RELATED ACCESSORIES > RELATED LED > HIGH EFFICACY



**K-VHE-0480-24**  
K-VHE-0480-24



**K-VHE-0960-24**  
K-VHE-0960-24



**K-VHE-1440-24**  
K-VHE-1440-24

## RELATED ACCESSORIES > RELATED LED > RGB / RGB-W / RGB-CCT



**K-RGBW-1530-24**  
K-RGBW-1530-24



**K-RGB-1920-120-24**  
K-RGB-1920-120-24

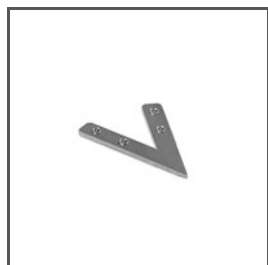


**K-RGB-0700-24**  
K-RGB-0700-24

## RELATED ACCESSORIES > OTHER RELATED ACCESSORIES > CONNECTORS

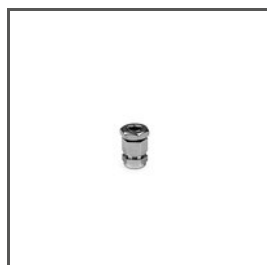


CONNECTOR  
**ZM**



CONNECTOR  
**ZM-NA**

## RELATED ACCESSORIES > OTHER RELATED ACCESSORIES > OTHER



GLAND  
**M8x1**  
C42265N00



GLAND  
**M10x1**  
C28275N00

# Profile DIPOKET

Ref. A01177

## RELATED ACCESSORIES > ELECTRONICS > SWITCHES



**UNI-11**  
E61603



**UNI-P**  
E61580