

ZOID

■ BOLLARD

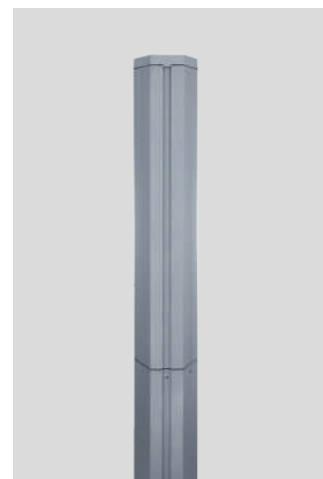
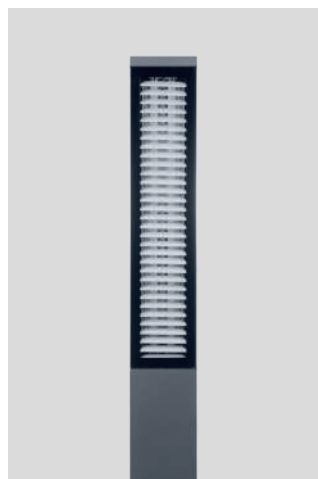
ZOID is a distinctive, low-height vertical bollard designed with a trapezoidal outline that creates a unique architectural feature in any outdoor space. With a single-sided light emission, **ZOID** provides excellent glare control, delivering a clean and comfortable illumination. As a Class 2 luminaire, **ZOID** uses cutting-edge LED technology that ensures flicker-free light, enhancing visual comfort while maintaining energy efficiency.

Available in 3000K and 4000K color temperatures, **ZOID** offers superb color rendering, ensuring vibrant and true-to-life illumination for a variety of applications. Whether lighting pathways, gardens, or architectural accents, the light quality enhances the aesthetic appeal of the surroundings.

Constructed with high-quality corrosion-resistant aluminum, **ZOID**'s housing is treated with a Nano Ceramic finish, followed by a super-durable coating that protects against wear, weather, and environmental elements. This ensures the bollard maintains its aesthetic appeal and performance over time, even in harsh conditions. The heat management system has been carefully engineered and rigorously tested to ensure **ZOID** performs reliably under high ambient temperatures, extending the lifespan of its components.

The height of the **ZOID** bollard can be fully customized to meet specific project requirements, allowing for tailored lighting solutions. This flexibility, combined with its sleek design, makes **ZOID** a true architectural element—equally striking whether illuminated or turned off. To further enhance its installation options, an anchorage unit is available as an accessory, ensuring secure placement in various outdoor settings.

Ideal for both residential and commercial projects, **ZOID** blends form and function, providing high-quality illumination while contributing to the overall design aesthetic. Its contemporary look, exceptional light quality, and durable construction make it a standout choice for outdoor lighting solutions.



Content
by Application



Content
by Family



www.unilamp.co.th/en/p/zoid

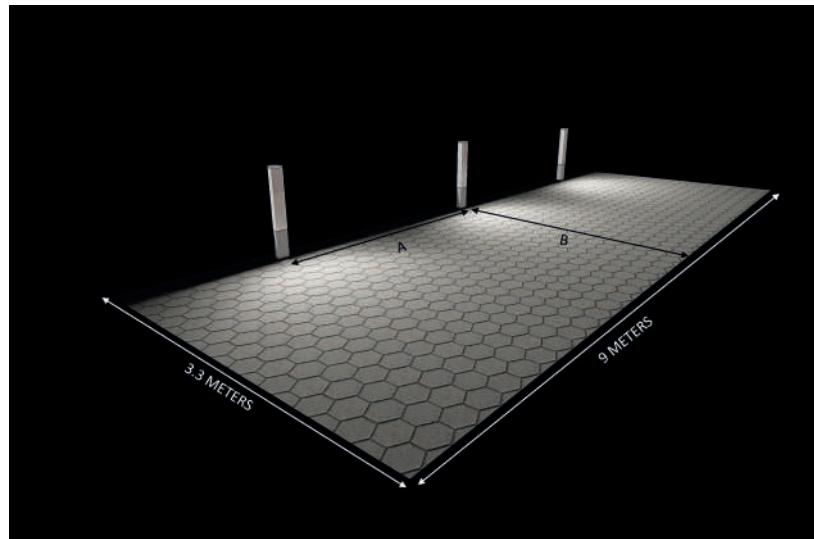
Specification

- Designed, manufactured and tested according to IEC 60598.
- LM6 die cast aluminum and extruded Aluminum body.
- Stainless steel screws.
- Nano ceramic surface conversion.
- Double layer coating.
- Safety glass cover.
- Post-cured silicone gasket.
- High quality LED module and driver.
- Installation must be carried out according to the enclosed product manual.

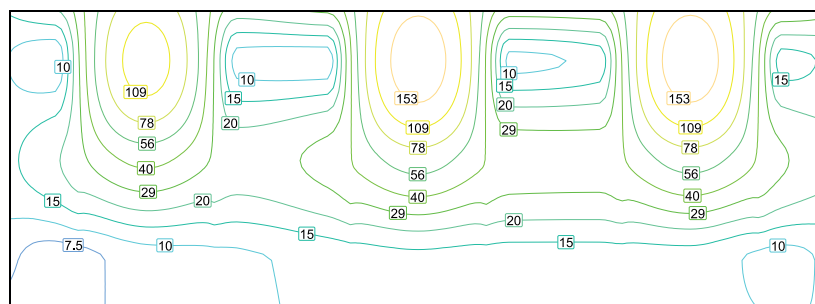
Available Color



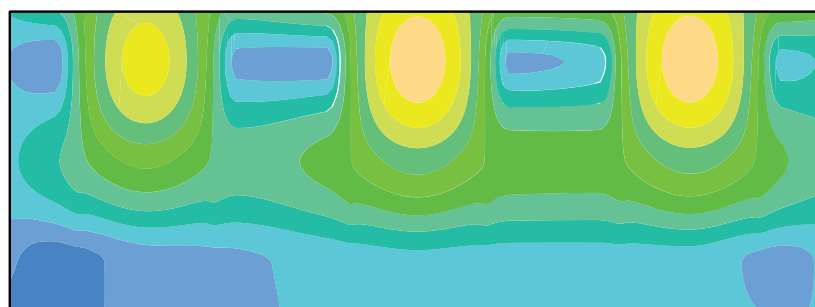
****Custom colors are available on request.**



PRODUCT NAME	: ZOID Bollard	DISTANCE A	: 3 METERS
TYPE	: LED 25W 3000lm 3000K	DISTANCE B	: 3 METERS
ORDERING CODE	: 7811-O-3-937-XX	MOUNTING HEIGHT	: 1 METERS



7.5 10 15 20 29 40 56 78 109 153 lx

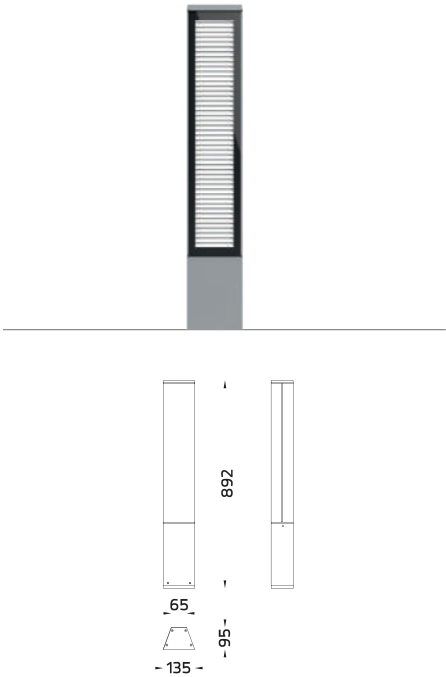


5.4 7.5 10 15 20 29 40 56 78 109 153 214 lx

ZOID




ZOID

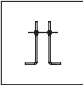


ZOID


Application Type : Bollard
Subgroup : Semi shielded bollard

ZOID / 7811	
Luminaire Performance	
	650 – 910 lm
	19 – 28 W
	31 – 34 lm/W
Beam Options	
	
Color Temperature	
	3000K/ 4000K
Controller	
	On-Off
Input Options	
	220-240Vac 50/60Hz

Accessories



Anchor bolt

	Product Code	Luminaire Wattage	Beam	CCT	Luminaire Lumen	Efficacy	Controller	Ordering Code
							⏻	
ZOID	OD-7811							
		19 W	N/A	3000 K	650 lm	34 lm/W	•	7811-0-3-879-XX
		28 W	N/A	3000 K 4000 K	870 lm 910 lm	31 lm/W 32 lm/W	• •	7811-0-3-937-XX 7811-0-3-986-XX

*Please contact sales team for special request.

Typical Application

